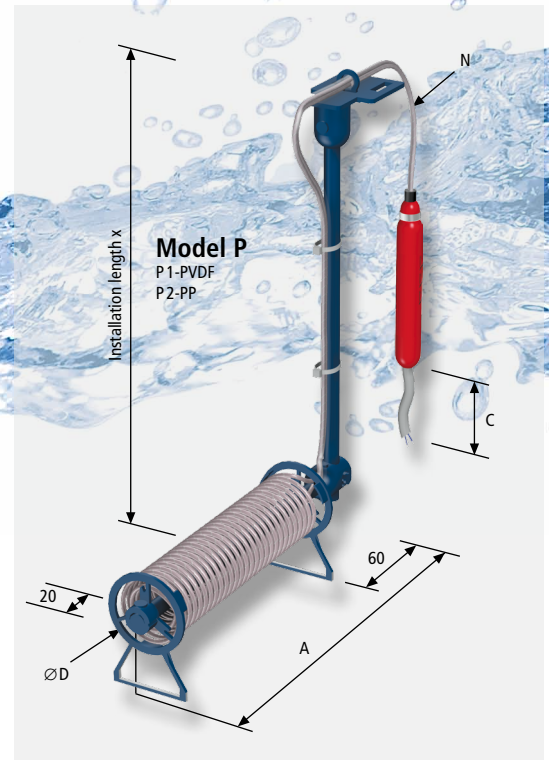
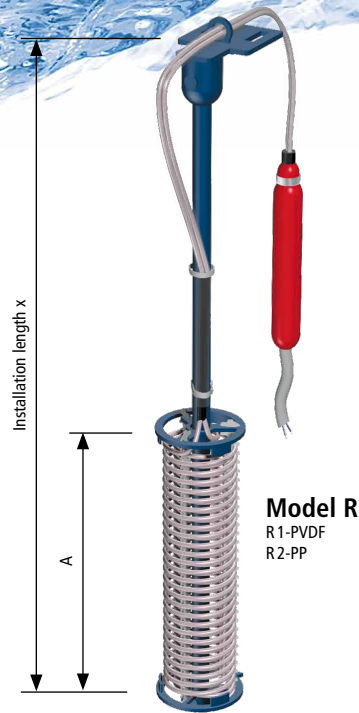


Cylindrical Heaters GALMATHERM®

GALMATHERM Cylindrical Heaters (Type C85 / C12)

The heater model P is an alternative to the ROTKAPPE angular heaters made of metal for heating very aggressive liquids. Since the horizontal part of the heater is heated, the contents of the tank are heated from the bottom, thus ensuring good heat transfer and distribution even at low or widely varying liquid levels. This cylindrical model permits the use of high power even in restricted spaces. Also, you can choose the type of the coating of the heating cable (FEP or PFA) and the lengths of the immersed, unheated connection cable [N] and of the external PVC connection cable [C] to meet your requirements.



GALMATHERM cylindrical heaters (Type C85 / C12)

Rated power [kW]	ØD [mm]	Model R Dimensions A [mm] for rated voltage		Model P Dimensions A [mm] for rated voltage		Type designation for rated voltage	
		230V~	400V3~	230V~	400V3~	230V~	400V3~
1,0	85	280	-	320	-	C8500102	-
1,5	85	330	465	370	505	C8500152	C8500155
2,0	85	410	-	450	-	C8500202	-
3,0	85	640	775	680	815	C8500302	C8500305
4,0	85	750	-	790	-	C8500402	-
4,5	85	-	920	-	960	-	C8500455
6,0	85	-	1160	-	1200	-	C8500605
9,0	125	-	1160	-	1200	-	C1200905
12,0	125	-	1340	-	1380	-	C1200125
15,0	125	-	1540	-	1580	-	C1200135

Type designation	coating heating cable F or P	Length of unheated connection cable N			Length of connection cable C			Model
		0=1 m	1=1,5 m	2=2 m	0=1 m	1=1,5 m	2=2 m	
C.....	F or P	3=2,5 m	4=3 m	5=3,5 m	3=2,5 m	4=3 m	5=3,5 m	R 1, R 2, P 1, P 2
		6=4 m	7=4,5 m	8=5 m	6=4 m	7=4,5 m	8=5 m	
Example:	F	6			1			P 1

C85003020F61P1: cylindrical heater, 3 kW, dimensions for 230V~ (ØD=85 mm, A=680 mm), FEP coating, 4 m unheated connection cable N, 1.5 m connection cable C, Model P 1 (PVDF)



GALMATHERM® with integrated Temperature Controller

Heaters with integrated temperature controllers offer the optimal solution especially for smaller containers in which the heater and temperature control have to be installed within a compact space. The heater, the temperature sensor and the switching device are all combined in a single unit. The nominal temperature can be set by the knob within the terminal casing. A change of temperature causes a movement of the switching membrane in a fluid-filled measuring system (capillary tube controller) by the change of volume. The membrane operates a switching contact which turns the heater on and off according to the set nominal temperature.

This heater with integrated temperature controller is available in nominal power ratings up to 3 kW at 230V~.

The BC terminal casing (Ø93 mm) can be supplied in PP or PVDF (BC/L). Ingress protection = IP 65 (water spray protection) acc. to EN 60529.

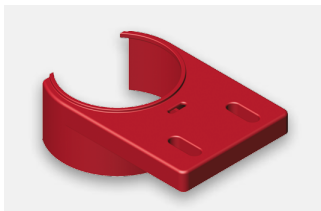


Temperature setting in the terminal casing

The terminal casing must be opened using the mounting wrench SB in order to set the control temperature.

The heater can be fixed to the tank with the support HWB.

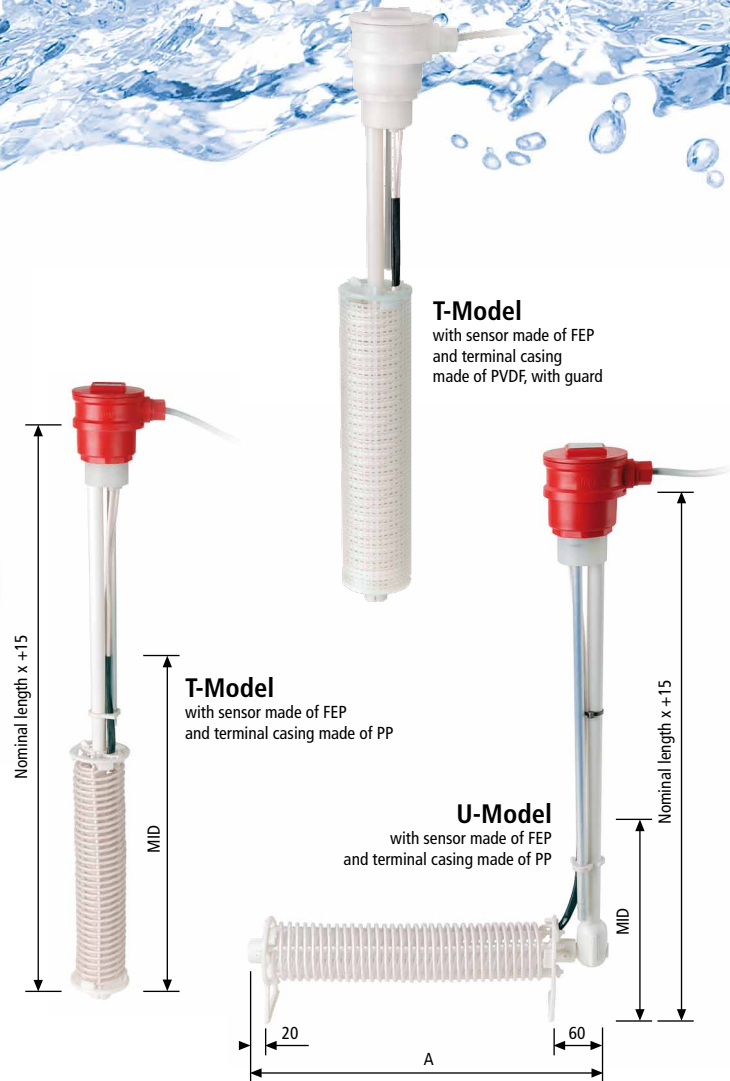
The coating of the heating cable is made of FEP with a surface loading of 1 W/cm². The immersion tube material of the temperature sensor is also made of FEP.



Support HWB (included in the delivery)



Mounting wrench SB (included in the delivery)



T-Model
with sensor made of FEP and terminal casing made of PVDF, with guard

T-Model
with sensor made of FEP and terminal casing made of PP

U-Model
with sensor made of FEP and terminal casing made of PP

T-Models

Nominal power [kW]	Nominal length x [mm]	Minimum immersion depth MID [mm]	Type designation Frame and terminal casing ...	
			... made of PP	... made of PVDF
1,0	500	335	C85001020F02T2	C85001020F02T1
1,5	630	390	C85001520F02T2	C85001520F02T1
2,0	800	470	C85002020F02T2	C85002020F02T1
3,0	1000	700	C85003020F02T2	C85003020F02T1

U-Models

Nominal power [kW]	Nom. length x [mm]	Minimum immersion depth MID [mm]	A	Type designation Frame and terminal casing ...	
				... made of PP	... made of PVDF
1,0	500	220	320	C85001020F02U2	C85001020F02U1
1,5	630	220	370	C85001520F02U2	C85001520F02U1
2,0	800	220	450	C85002020F02U2	C85002020F02U1
3,0	1000	220	680	C85003020F02U2	C85003020F02U1

Technical data of the temperature controller

Control range	0...90°C
Contacts	1 Changeover switch
Switching power	max. 3,45 kW (15A/230V~)
Switching differential	+/- 4 K
Minimum temperature change	1 K/min